

# Withal

## Circular Economy

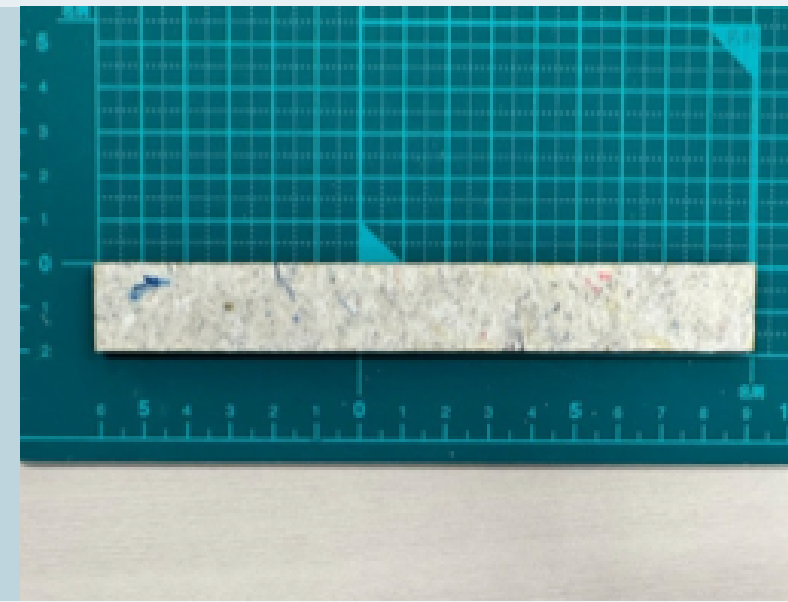
本橋 未琉    石井 美雲  
小林 千香    佐伯 隼人  
網倉 光生    松本 瑞希

# 素材の可能性を探る



曲げ

W=150mm H=20mmでカット



30分冷水に浸して観察



型に固定し、20分乾燥





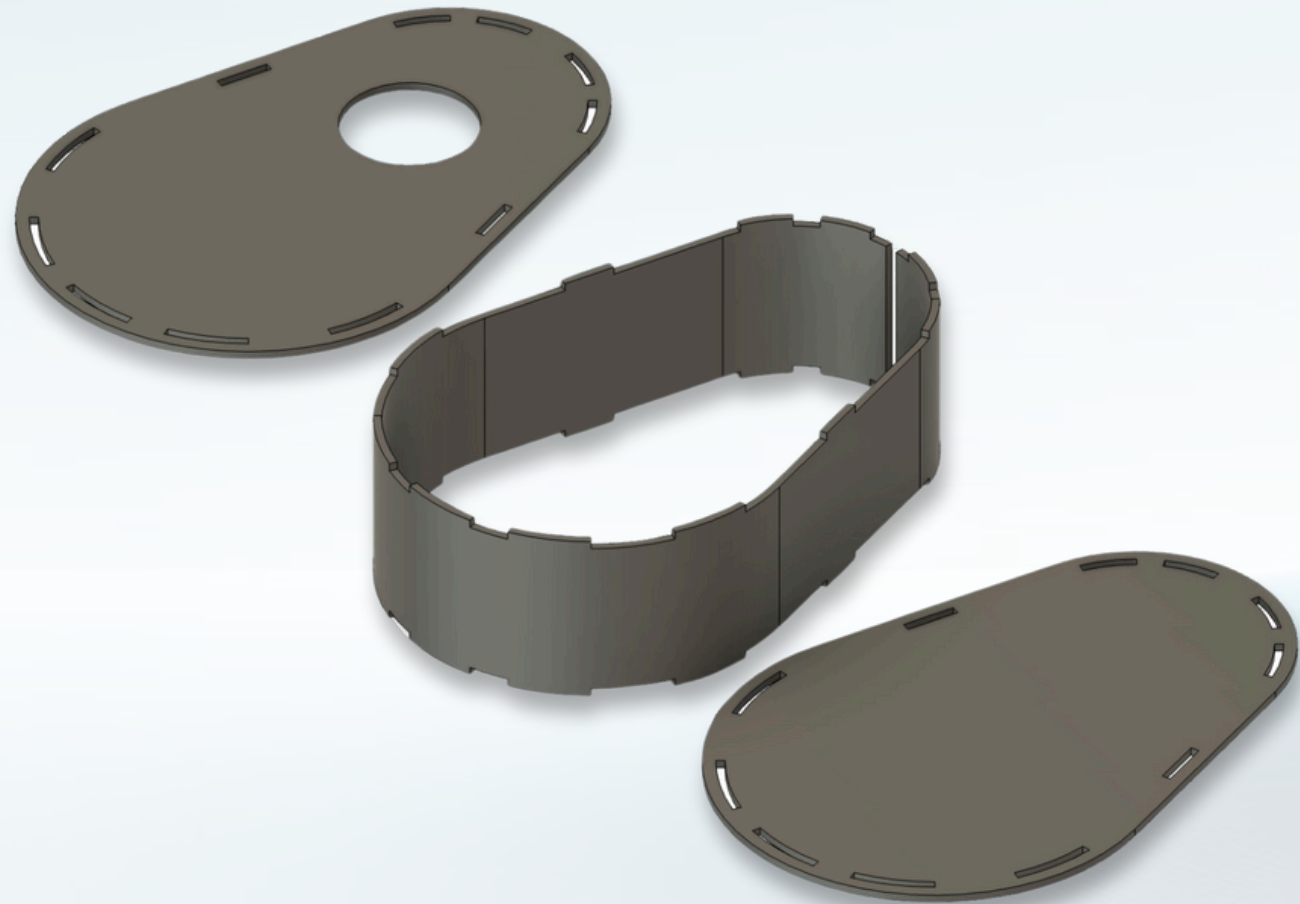


湾曲した状態を保つことを確認

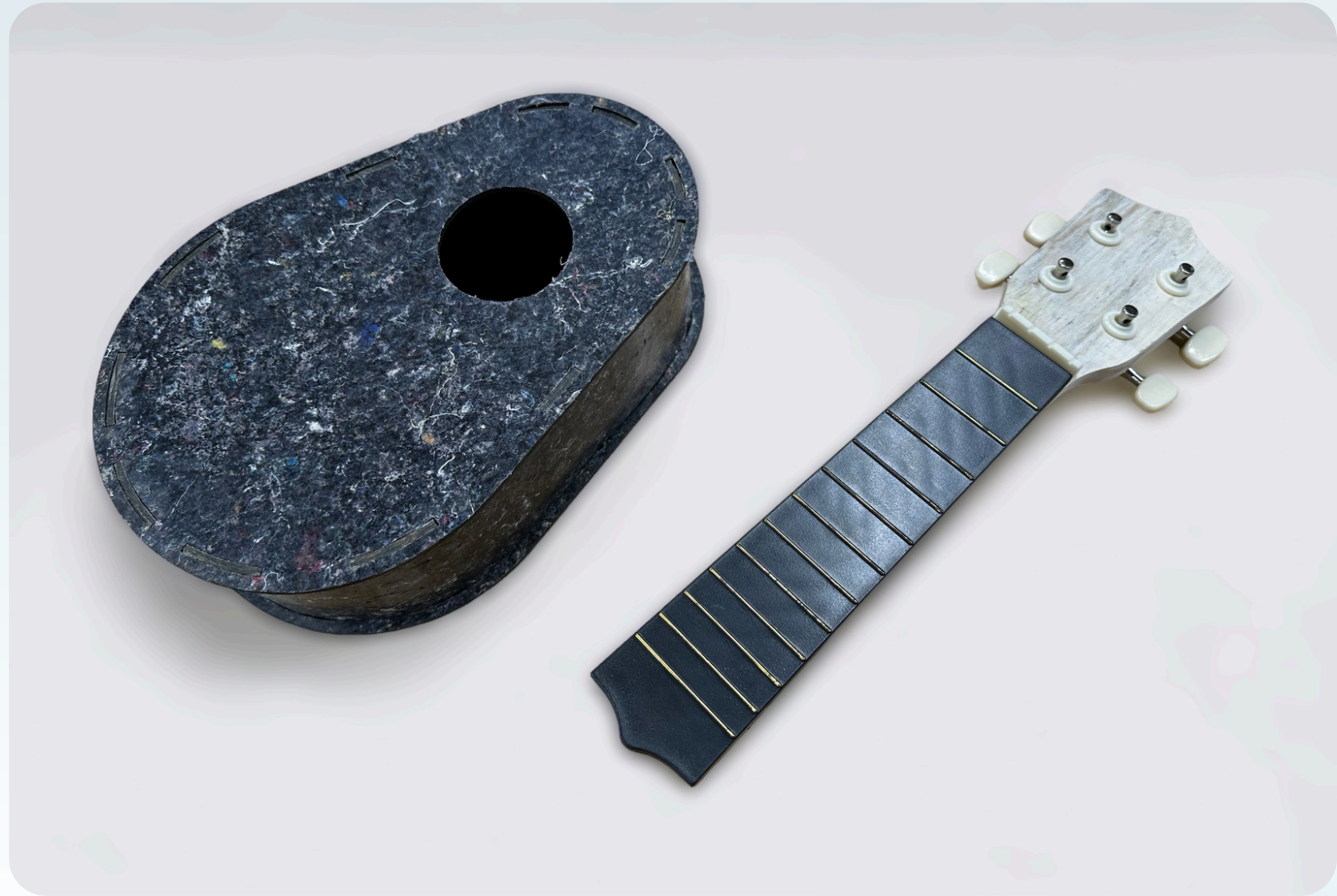


ウクレレ本体の製作開始













Grade 3 | Music

# Types of Musical Instruments

Lesson Review (Groupwork)

Teacher Freya Moore





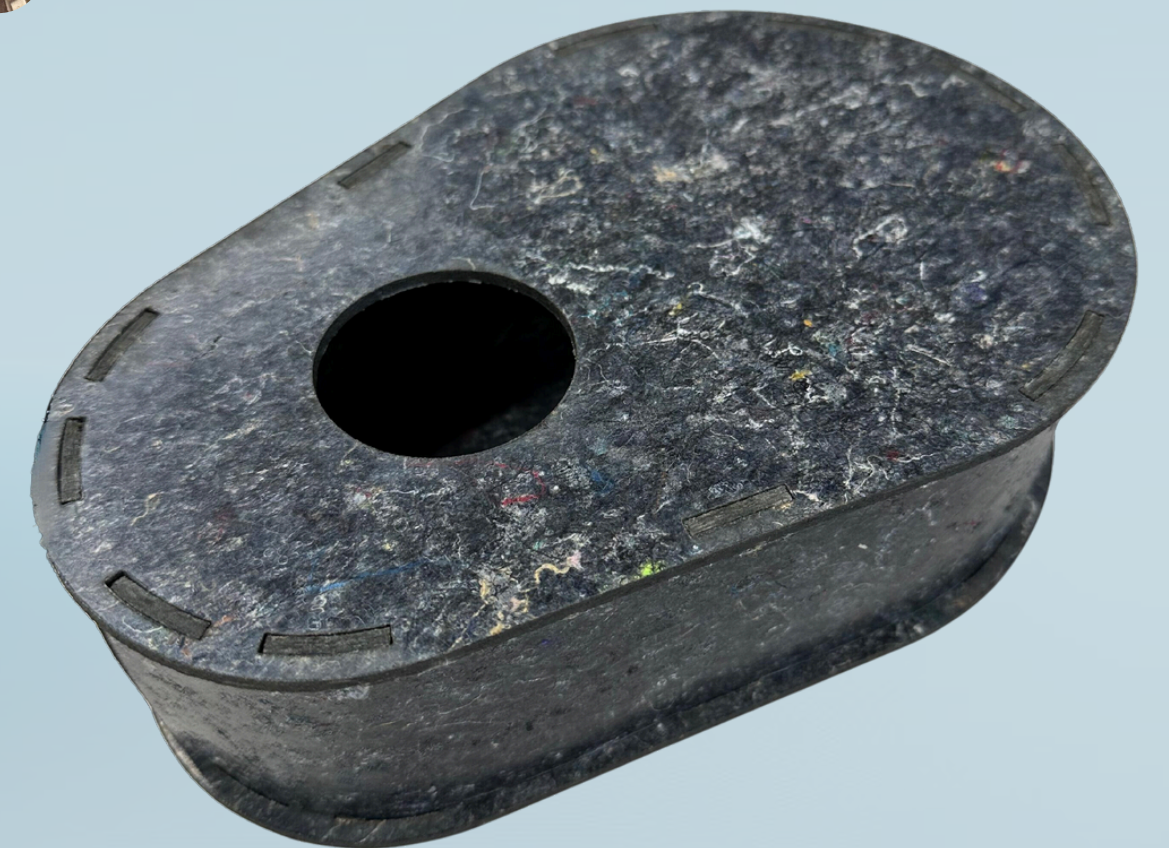
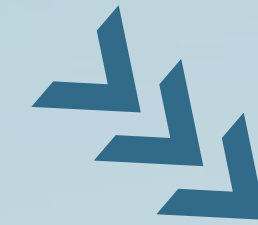
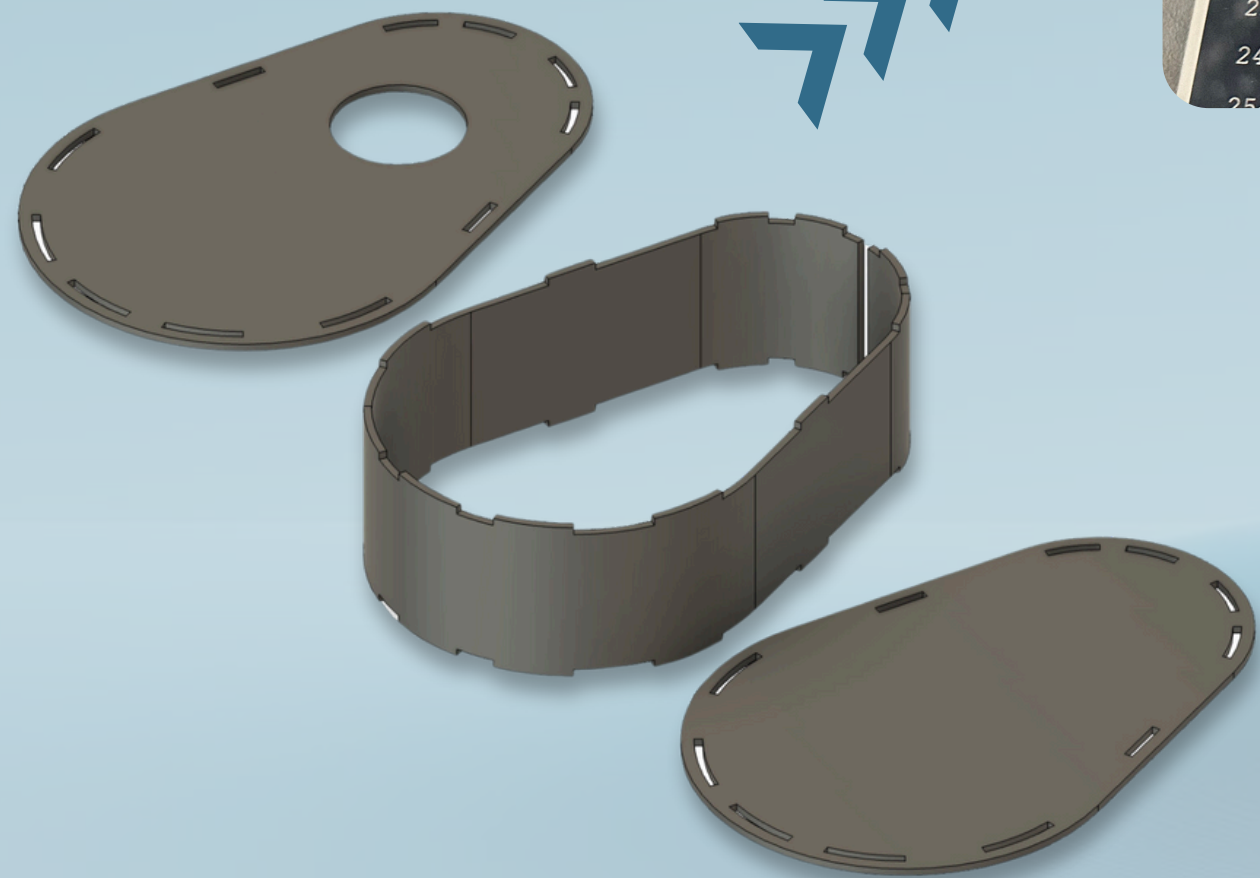
# Recycling Old Clothes to Make Ukuleles

KOKI  
AMIKURA





# How was it made?







Approx. 85 decibels



Approx. 70 decibels

**Is it inferior to a real ?**



**No, it isn't.**



**In apartment complexes,  
real ukuleles are  
sometimes too loud**







**Quiet ukulele is  
not a nuisance  
to play in an  
apartment complex**

**Thank you for your attention.**